



The Zambia Farm to Market Compact



MILLENNIUM PROJECT COMPLETION AGENCY ZAMBIA LIMITED PRE-OFFER WEB-CONFERENCE

**Feasibility Study, Detailed Engineering Design and Environmental and Social Impact
Assessment for the Improvement of Prioritized Roads
Ref No MPCA-Z-24-4006**

3.00pm CAT (GMT+2)

14th November, 2024

Presentation Outline

☐ **Part 1: Instructions to Offerors**

- Timelines
- Scope
- RFO Forms
- Submission Process
- Evaluation process

☐ **Part 2: Technical Matters**

☐ **Part 3: Environmental, Social & Gender and Health & Safety Requirements**

Timelines

Description	Timelines
RFO Launch	25 – Oct - 2024
Pre-Offer Conference	14 – Nov - 2024
Clarification Request Deadline	20 – Nov - 2024
Clarification Response Deadline	4 – Dec - 2024
Offer Submission Deadline	18 – Dec - 2024

Scope

- ❑ Segmented into two (2) Packages namely Package 1 and 2
- ❑ Each Package with base and option scope (*full details in technical presentation slides*)
- ❑ Offerors may submit an offer for either Package 1 or Package 2 or for both Packages.

Scope Budget Estimate

☐ Package 1

- Base Scope: \$4,440,930
- Option A: \$2,505,855

☐ Package 2

- Base Scope: \$4,798,036
- Option A: \$1,583,860

☐ Grand Total Base plus Option Scope: **\$13,328,681**

☐ This is an **estimate** and not a fixed budget maximum or minimum.

Participation Framework

- ❑ A Sub-consultant may participate in more than one offer as a Sub-consultant.
- ❑ For Joint Ventures, Offerors should submit JV Agreements or Intent to form a JV.
- ❑ Key Professional Personnel may not participate in more than one offer.
- ❑ Offerors who wish to be considered for the award of both Packages must include entirely different Key Professional Personnel in its offer for each Package.

Technical Offer Forms

- ☐ **TECH-1: Technical Offer Submission Form** with the following annexures:
 - Power of Attorney
 - Letter(s) of Incorporation (or other documents indicating legal status)
 - Joint Venture or Association Agreements (if applicable, but without showing any Financial Offer information)
 - Beneficial Ownership Disclosure Form
 - Any other documents required in the Data Sheet
- ☐ **TECH-2A: Financial Capacity**
- ☐ **TECH-2B: Litigation**
- ☐ **TECH-3: Organization of the Offeror**

Technical Offer Forms

Cont'd

- ☐ **TECH-4: Experience of the Offeror**
- ☐ **TECH-5: References of MCC-Funded Contracts**
- ☐ **TECH-6: Description of Approach, Methodology and Work Plan for Performing the Assignment**
- ☐ **TECH-7: Comments and Suggestions on the Terms of Reference & Assignment**
- ☐ **TECH-8: Team Composition and Task Assignments**
- ☐ **TECH-9: Staffing Schedule**
- ☐ **TECH-10: Work and Deliverables Schedule**
- ☐ **TECH-11: Curriculum Vitae (CV) for proposed Key Personnel**
- ☐ **TECH-12: Compliance With Sanctions Certification Form**

Financial Offer Forms

- ☐ **FIN-1: Financial Offer Submission Form**
- ☐ **FIN-2: Price Summary**
- ☐ **FIN-4: Breakdown of Remuneration**

Submission Process

Electronic Submission

- ☐ Submission solely by File Request Link (FRL)
- ☐ Email submissions not acceptable
- ☐ Hard copy submissions not acceptable
- ☐ All submissions shall be in Microsoft Office or PDF format
- ☐ For each Package offered, Offerors are required to submit a complete separate Technical Offer covering the Base Scope as well as the Scope for Option A
- ☐ Each offer must contain all the Technical Offer Forms (Form TECH-1 to Form Tech-12), clearly distinguishing between the work to be carried out under the Base Scope and the Option
- ☐ The Technical Offer and the Financial Offer shall be submitted in separate files

Electronic Submission Cont'd

- ☐ No zipped files (WinRAR, WinZIP, etc.).
- ☐ If an Offeror submits a Technical Offer with password protection, the password should be sent no later than 24 hours before the deadline for submission of Offers to the email address provided in the RFO.
- ☐ If an Offeror submits a Financial Offer with password protection, the password should be sent when requested by the Interim Procurement Agent.
- ☐ Faulty passwords invalidate submission.
- ☐ Late submissions will automatically be rejected by FRL software.
- ☐ FRL software keeps an audit record of submissions.

Evaluation Process



Rejection
Basis

Process

Issues of
note

Reasons for rejection, non-responsiveness or disqualification

UNCLASSIFIED

- ☐ Engagement in fraud, corruption etc
- ☐ Failure to provide all information and documents
- ☐ Late offer submission
- ☐ Attempts to influence the evaluation
- ☐ Not substantially response
- ☐ Negative performance/references responses

The Process!

- ❑ Evaluation undertaken by a Panel of about 3 to 5 members
- ❑ Steps
 - Administrative Compliance Review
 - Technical Evaluation
 - Financial Evaluation

Administrative Compliance Review

- ☐ General documentary compliance
- ☐ Technical Offer submission form
- ☐ Signed CVs
- ☐ Power of Attorney
- ☐ Eligibility

Compliance method (Pass/Fail) used

Eligibility

- ☐ **Consultant: Single Entity(+ Sub) or Joint Venture**
- ☐ **If JV, Letter of Intent or JV agreement to be submitted**
- ☐ **Debarred and Excluded Parties, not eligible**
- ☐ **No Conflict of Interest (ITO 5.8)**
- ☐ **Non-participation:**
 - **AE Board of Directors**
 - **Current employees of AE**
 - **Current employees of GRZ**
 - **Current employees of other AEs**

Technical Evaluation

- ❑ **Minimum technical score: 75 points**
 - **Organizational capability and experience of the Offeror: 15 points**
 - **Approach, Methodology, and Workplan: 25 points**
 - **Key Professional Personnel: 60 points broken down as follows:**
 - **Principal Road Design Engineer: 20 points**
 - **Pavement/Materials Engineer: 10 points**
 - **Transport Economist: 10 points**
 - **Environmental and Social Impact Assessment Manager: 10 points**
 - **Hydrologist: 10 points**
- ❑ **Technical weights: 90%**
- ❑ **Financial weights: 10%**

Scores

Each sub-criteria item shall be scored between 0 – 5 points as follows:

0 = Not meeting the requirements: 0% of points

2 = Significant deviation from the requirements: 40% of the points

3 = Marginal deviation from the requirements: 60% of the points

4 = Meeting the requirements: 80% of the points

4.5 = Marginally exceeding the requirements: 90% of points

5 = Significantly exceeding the requirements: 100% of the points

Financial Evaluation

- ❑ Conducted after MCC No Objection on the Technical Evaluation Report
- ❑ Opening of Financial Offers *only for Offerors that meet the minimum technical score*
- ❑ Arithmetic error checks
- ❑ Calculation of combined scores
- ❑ Ranking

Evaluation Points to note

- ☐ **Technical Offers should not contain prices**
- ☐ **AE may seek clarifications from Offerors during evaluation**
- ☐ **Evaluation is progressive:**
 - 1. Administrative Compliance Review**
 - 2. Technical Evaluation**
 - 3. Financial Evaluation**
- ☐ **Offerors will be notified of evaluation outcome through Notification of Technical Evaluation Results, Notification of Intent to Award and Notification of Combined Evaluation Results**
- ☐ **Bid Challenge system in place (ITO 30.1).**

Part 2

Technical Aspects of RFO

**Roads & Access
Project**

**List of Prioritized
Roads for FS**

**Contract
Packaging**

**Key Staff,
Deliverables &
Timelines**

Roads and Access Project



Objective

Decrease transportation costs in prioritized agriculture corridors



Strategic Approach

Improvements to road infrastructure, access and road maintenance

Activity 1 – Improving Roads Activity

- Improvements to road segments (e.g. construction, rehabilitation, maintenance etc)

Activity 2 – Improving Access Activity

- Improving connections (physical and non-physical) to markets and agricultural activities of rural populations.
- Improving transport services for small holder farmers

Activity 3 – Strengthening Zambia Road Management

- Technical Assistance, Capacity Building, Legal and Institutional Reforms to Road Sector Actors in order to improve road asset management

Focus

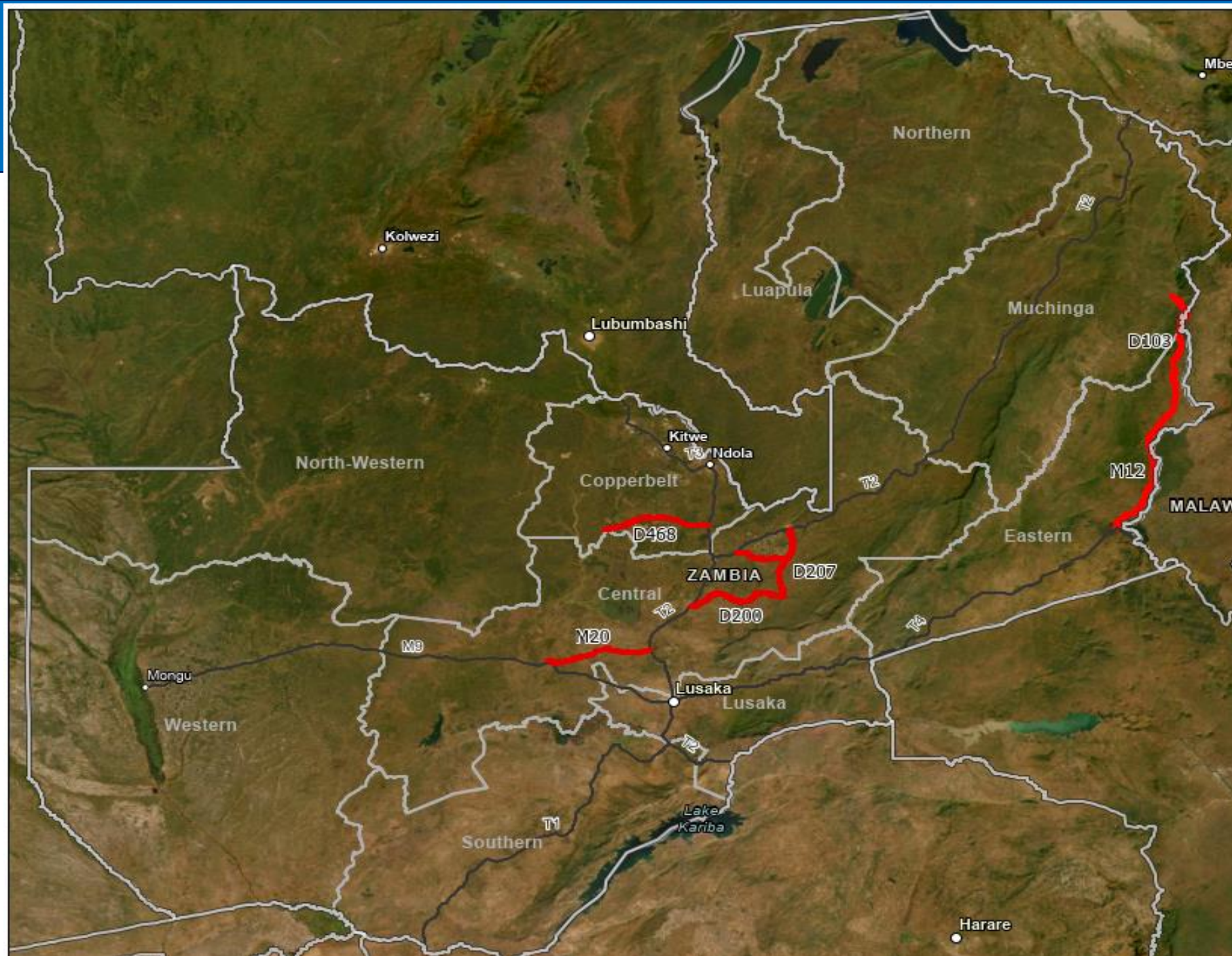
Activity 1 – Improving Roads Activity

Improving Roads Activity aims to:

- improve road conditions, quality, access, and climate resilience for selected segments within the identified agricultural corridors through the design, construction, expansion, rehabilitation, upgrades, and/or strengthening of selected roadways, amounting to a combined length of approximately 675km.

List of Prioritized Roads for FS

#	Segments	Existing pavement	Length (km)
1	M20 - Landless Corner to Mumbwa	Partially paved	116
2	D200 - Kabwe to Mukonchi Mission turnoff	Unpaved	36
	D764 - Mukonchi Mission turnoff to Mukonchi centre	Unpaved	12
	D200 - Mukonchi Mission turnoff to D202 turnoff	Unpaved	28
	D200/D207 – D202 turnoff to Masansa	Unpaved	101
	D207/D214 - Masansa to T2 at Mkushi	Unpaved	42
	D208/209 - Masansa to Mpula (T2)	Unpaved	58
3	D468 - Luansobe turnoff (T3) to Mpongwe (paved section)	Paved	60
4	M12 - Chipata to Lundazi	Previously paved but paving now lost on some sections	180
	D103 - Lundazi to Old Magodi	Unpaved	42
Total Length			675

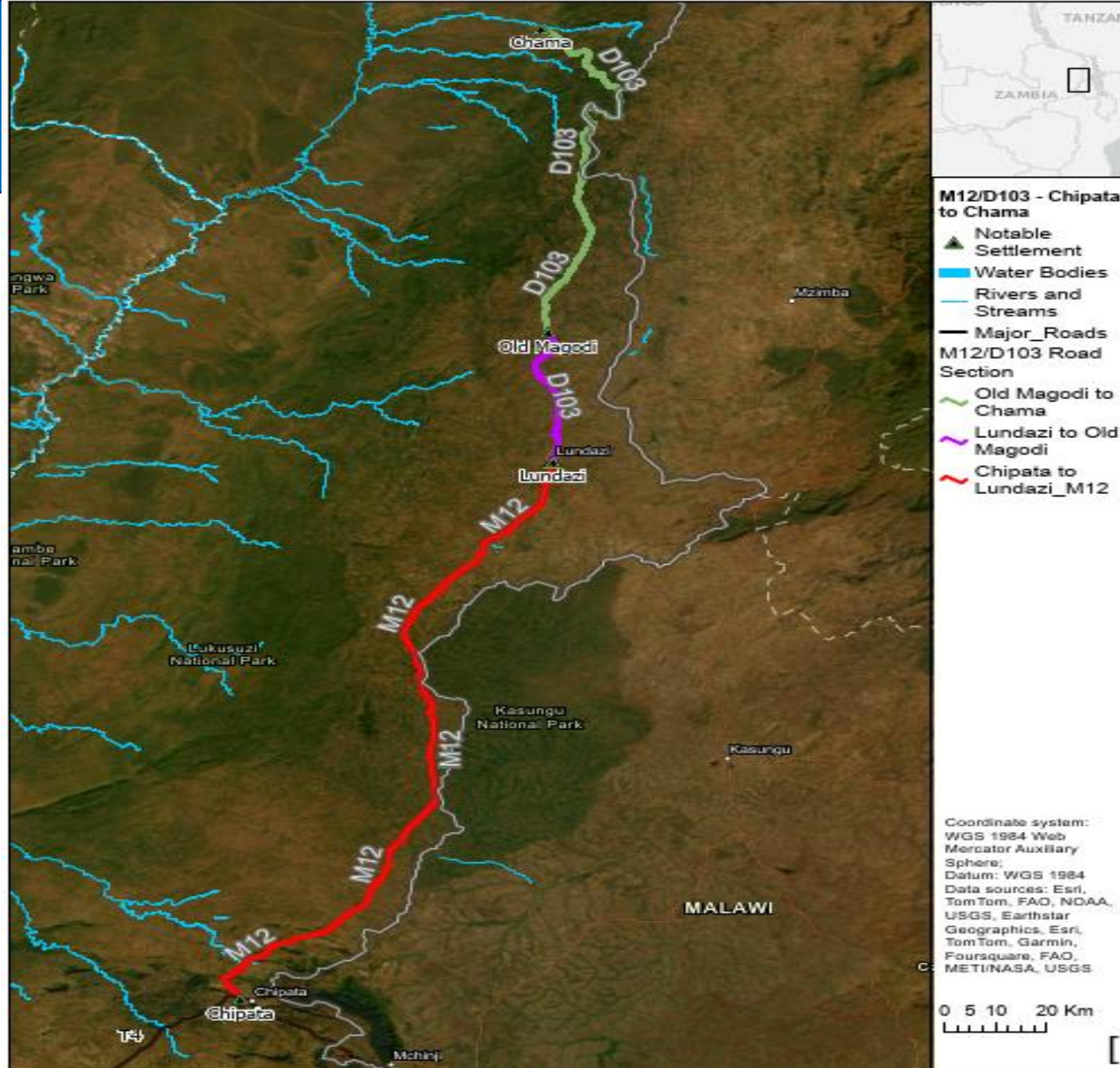


Zambia Highways

- Candidate Roads
- Major Highways
- Province Boundaries

Coordinate system: WGS 1984 Web Mercator
Auxiliary Sphere:
Datum: WGS 1984
Data sources: Esri, TomTom, FAO, NOAA, USGS,
Earthstar Geographics, Esri, © OpenStreetMap
contributors, TomTom, Garmin, FAO, NOAA,
USGS

0 35 70 140 Km
[

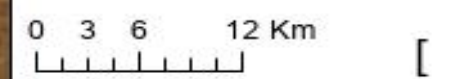


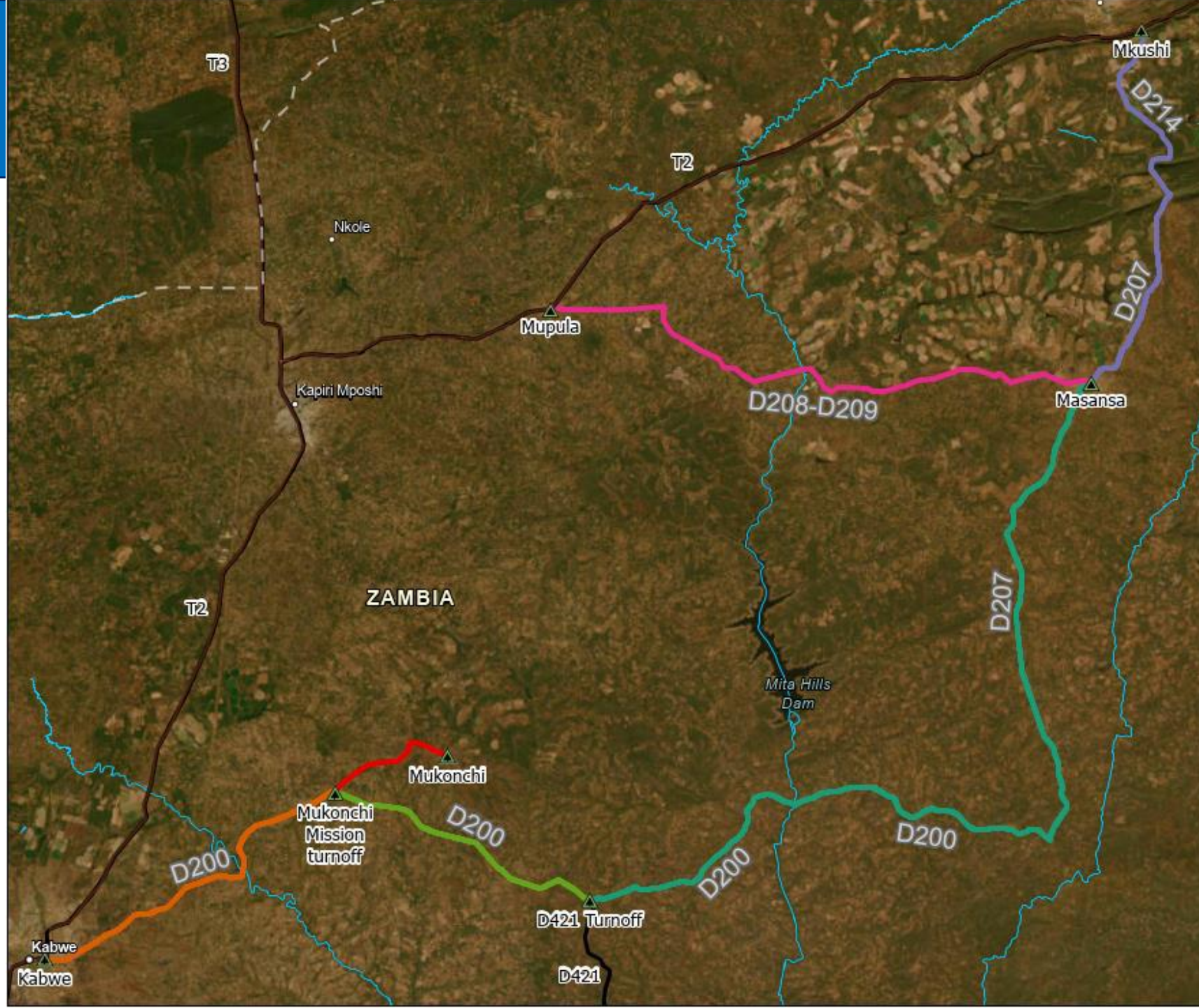


M20 Landless Corner to Mumbwa

- ▲ Notable Settlement
- Water Bodies
- Rivers and Streams
- Major Roads
- M20 Road Section
 - Landless Corner on the T2 to Keembe Farms Institute
 - Keembe Farm Institute to Namakolongo School
 - Namakolongo School to Mumbwa

Coordinate system: WGS 1984 Web Mercator
Auxiliary Sphere:
Datum: WGS 1984
Data sources: Esri, TomTom, FAO, NOAA, USGS, Earthstar Geographics, Esri, TomTom, Garmin, Foursquare, FAO, METINASA, USGS





**D200/D207/D214 -
Kabwe via Masansa
to Mkushi and
D208/209 - Masansa
to Mpulu**

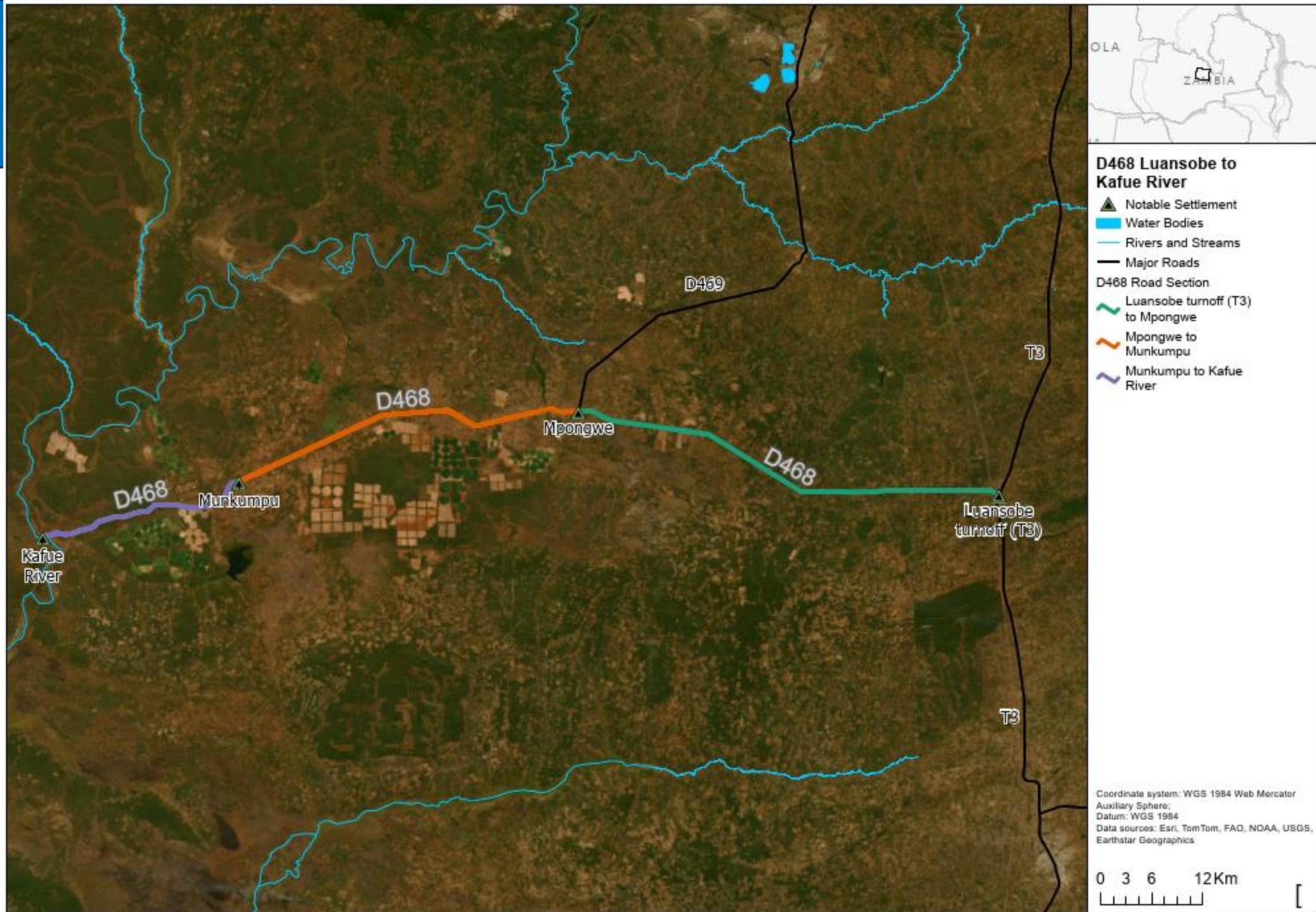
- ▲ Notable Settlement
- Water Bodies
- Rivers and Streams
- Major_Roads

**D200/D207/D214 Road
Section**

- Kabwe to Mukonchi
Mission turnoff
- Mukonchi Mission
turnoff to D421 turnoff
- Mukonchi Mission
turnoff to Mukonchi
- D421 turnoff to
Masansa
- Masansa to T2 at
Mkushi
- Masansa to T2 at
Mpulu (D208/D209)

Coordinate system: WGS 1984 Web Mercator
Auxiliary Sphere:
Datum: WGS 1984
Data sources: Esri, TomTom, FAO, NOAA, USGS,
Earthstar Geographics, Esri, TomTom, Garmin,
Foursquare, FAO, METI/NASA, USGS

0 3.5 7 14 Km



Contract Packaging – RFO Table 11, Pg 81

	Package 1			Package 2		
Engineering Services	Base		Option A	Base		Option A
	M12/D103 FS & DD	D468 FS	D468 DD	M20 FS & DD	D200/D207 FS	D200/D207 DD
Feasibility Study and Preliminary Designs (FSPD)	Full Scope	Full Scope	N/A	Full Scope	Reduced Scope	N/A
Preparation of Detailed Design and Tender Documents (DD)		N/A	Full Scope		N/A	Full Scope
Overall duration including final Client approval	21 months	10 months	10 months	18 months	6 months	14 months

Key Staff - RFO

#	Feasibility Study	Detailed Design
1	Principal Road Design Engineer (Team Leader)	Principal Road Design Engineer (Team Leader)
2	Transport Economist	Pavement/Materials Engineer
3	Hydrologist	Hydrologist
4	Environmental and Social Impact Assessment Manager	Environmental and Social Impact Assessment Manager



Deliverables and Timelines for Feasibility Studies and Detailed Designs

Refer to RFO Table 17, pg 152 of TORs

Part 3 Environmental & Social Performance

Objective

Governing
Framework

RFO Environmental,
Social & Gender and
Health & Safety
Requirements

Objective



The objective is to highlight the environmental, social & gender and health & safety requirements in the RFO in order for Offerors to prepare and submit responsive bids.

Governing Framework

- MCC Environmental Guidelines
 - Prohibited from undertaking, funding or supporting any project that is “likely to cause a significant environmental, health, or safety hazard.”
- IFC Performance Standards
 - 8 Performance Standards
 - PS 1, 2, 3, 4, 5, 6 and 8 most applicable to the Roads & Access Project

Governing Framework

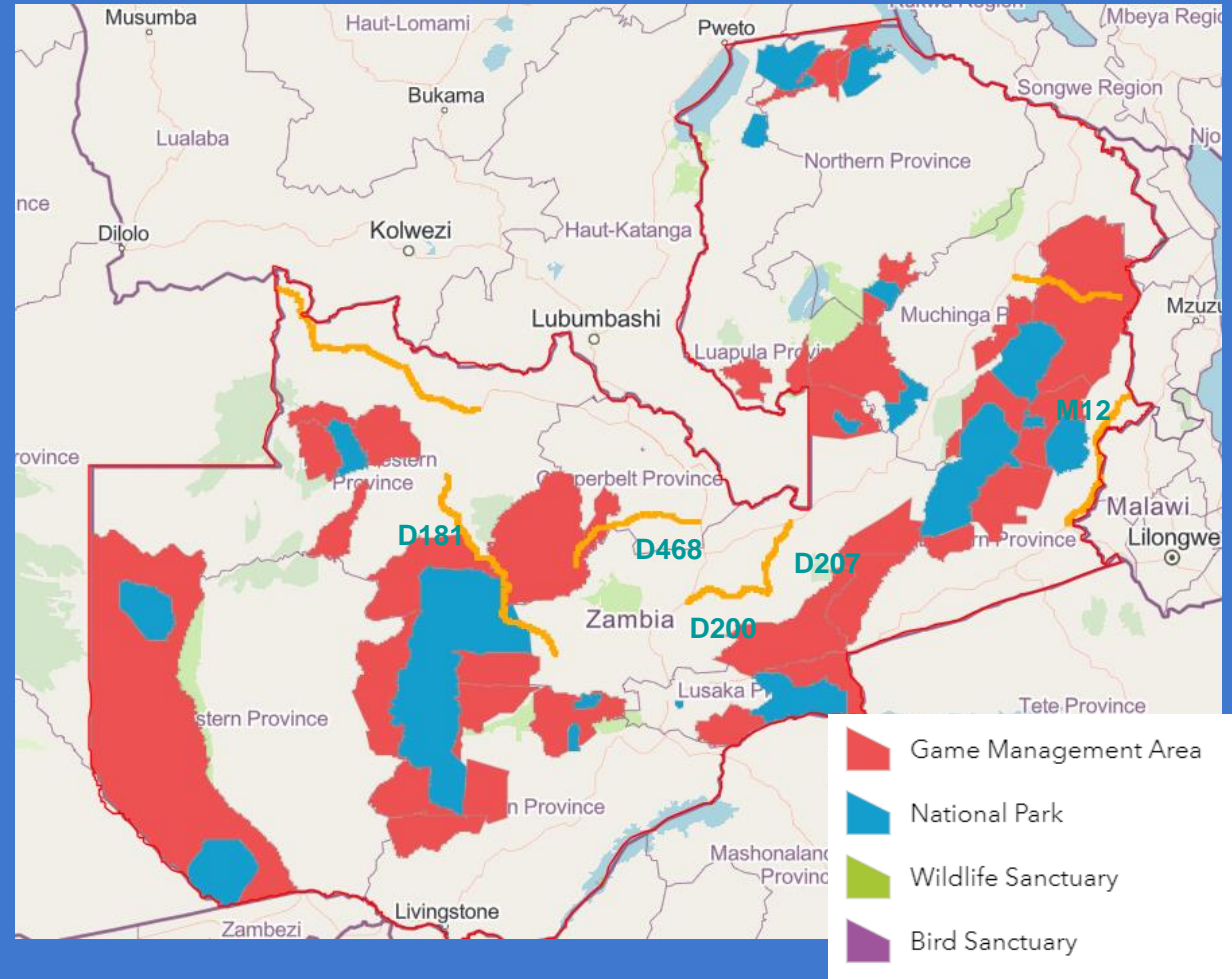
- **Zambian Environmental Laws & Regulations**
 - *A Compact project is expected to comply with host-country laws, regulations and standards to mitigate adverse environmental and social impacts*
 - Environmental Management Act No.12 of 2011, EM Act Amendment No.8 of 2023, EIA Regulations Statutory Instrument No.28 of 1997
- **MCC Gender Policy & Social Inclusion Strategy**
 - Counter-Trafficking in Persons (CTIP) policy, sexual harassment and gender-based violence prevention

M12/D103 Chipata – Lundazi – Old Magodi Road Features



Risks to National Parks, Protected Forest, & Game Management Areas

- M12/D103 Road passes through protected forests, & near National Parks and GMAs. Implementation will need to be aligned with IFC PS 6 - Biodiversity Conservation and Sustainable Management of Living Natural Resources.



Highlights of ESP Requirements in the RFO

- Offerors refer to **Tables 11, 12 and 17 of the TOR** and accompanying notes for detailed information on Contract Packaging, Environmental and Social Services, and Timelines for the submission of deliverables,
- Evaluation Criteria ITO 24.1 (1.2) and Form Tech 4 Experience of the Offeror: *Experience in environmental and social impact assessment for rural and interurban paved and unpaved roads and bridges investment projects*
- Evaluation Criteria ITO 24.1 (2) and Form Tech 6 - *Description of Approach, Methodology and Work Plan for Performing the Assignment*
 - Include **environmental, resettlement, health & safety, stakeholder engagement, gender & social inclusion tasks in the Approach, Methodology and Workplan – LOE (Form Tech 9) for inception stage, feasibility study, detailed designs & tender documents (ESMPs, BOQ, Technical Specifications)**

ESP Requirements - Contract Packages Table 12

page 82 of RFO

ZEMA SUBMISSIONS

- Two Scoping Reports and ESIA Terms of References (TOR)
 - one for Package 1 M12/D103 - Chipata-Lundazi to Old Magodi Road,
 - One for Package 2 M20 Landless Corner to Mumbwa Road.
- Two full ESIAs, one for Package 1 and the other for Package 2
- Addendum Task Reports (E&S Scoping, TOR, ESIA) will be Annexes to respective Base Reports

ESP Requirements – Coordination and Multi-disciplinary Approach

Section 13.1 on Page 111 of RFO

- The Consultant's Environmental and Social/GSI team will be expected to coordinate with engineering team so that multidisciplinary perspectives inform the feasibility study & detailed engineering designs.
- The Consultant's E&S and GSI team will also need to coordinate and collaborate through sharing of data and regular communication with the Resettlement Consultant, during the feasibility study stage & development of Resettlement Policy Framework, and during design stage & Resettlement Action Plan development.

ESP Requirements – Coordination and Multi-disciplinary Approach

Section 18.20 on Page 144 of RFO

- An MCC due diligence consultant is completing a detailed project risk assessment on Counter Trafficking In Persons. The FSDD/ESIA Consultant will be required to review the Project Trafficking-in-Persons (TIP) Risk Assessment Report, and develop TIP Risk Management Plans as components of Package 1 (M12/D103 Road) and Package 2 (M20 Road) ESIA/ESMPs.

ESP Requirements – Stakeholder Engagement & Consultation Plan

Multi-disciplinary effort throughout the Duration of the
FS/DD/ESIA Assignment

- Engagement & Consultation with GRZ Officials, RDA, ZEMA, Forestry Dept, Dept National Parks & Wildlife, Utility Companies, Provincial/District administration officials, Councils/Municipalities,
- Coordination with MCA-Zambia II during Scoping meetings
- MCAZ II to conduct prior stakeholder engagement & public consultations in project areas BEFORE commencement of detailed topographic surveys by the Consultant team.

**THANK YOU FOR YOUR KIND
ATTENTION**